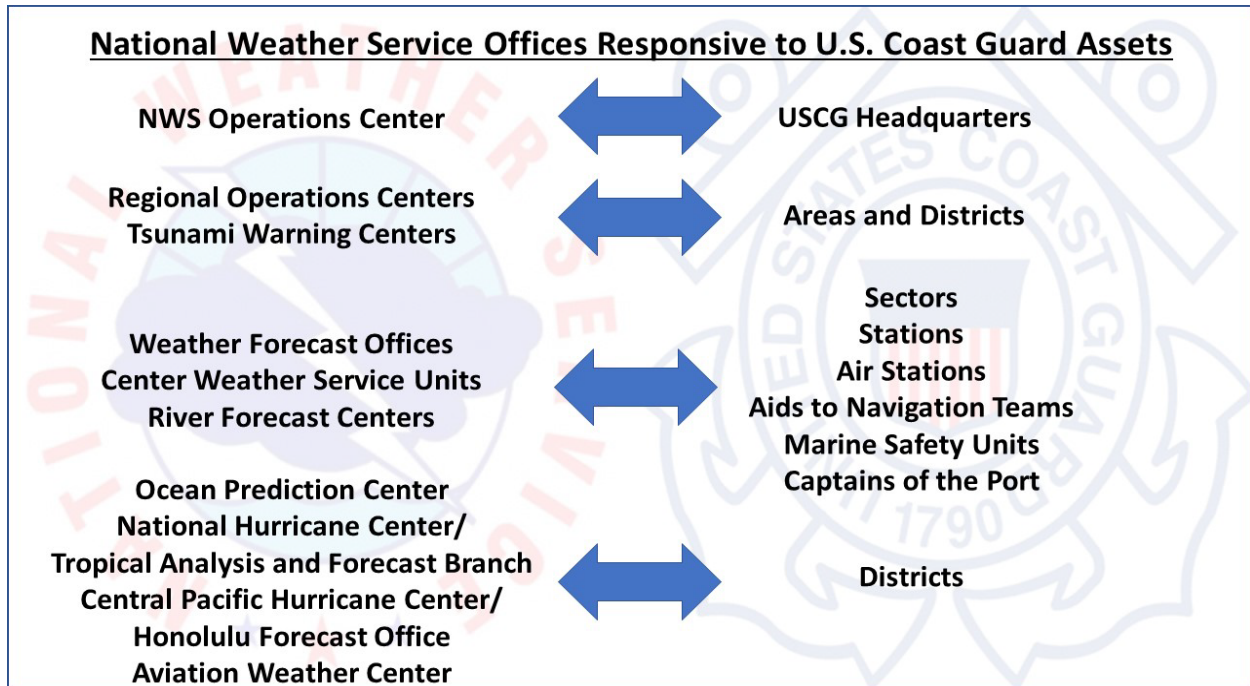


NWS/USCG Contact Information



NWS Operations Center (301-244-9650)

USCG Headquarters (202-372-4500)

NWS Region Operations Centers

**Alaska Region Operations Center (907)
266-5199**

District 17, Juneau, AK – (907-463-2000)
Sector Anchorage (907-428-4100)

Central Region Operations Center (816-200-1140)
(None)

Eastern Region Operations Center (631-244-0172)

District 1 – Boston, MA (202-372-2100)
District 5 – Portsmouth, VA (757-398-6441)
District 9 – Cleveland, OH (800-321-4400)
Atlantic Area – Portsmouth, VA (757-483-8567)

Pacific Region Operations Center (808-292-1586)

District 14 – Honolulu, HI (800-331-6176)

Southern Region Operations Center (682-703-3747)

District 7 – Miami, FL (305-415-6800)

District 8 – New Orleans, LA (504-589-6225)

Western Region Operations Center (801-524-7907)

District 11 – Alameda, CA (510-437-3701)

District 13 – Seattle, WA (206-220-7001)

Pacific Area – Alameda, CA (510-437-3701)

NWS River Forecast Centers

Alaska-Pacific River Forecast Center (907-266-5160)

(none)

Arkansas Red-Basin River Forecast Center

(none)

California Nevada River Forecast Center (916-979-3056)

Sector Humboldt Bay (707-839-6113)

Sector Los Angeles-Long Beach (310-521-3600)

Sector San Diego (619-278-7000)

Sector San Francisco (415-399-3547)

Colorado River Forecast Center

(none)

Lower Mississippi River Forecast Center (985-641-4343)

Sector Lower Mississippi (901-544-3912)

Sector New Orleans (504-365-2200)

Mid-Atlantic River Forecast Center (814-954-6408)

Sector Delaware Bay (215-271-4800)

Sector Hampton Roads/Virginia (757-483-8567)

Sector Maryland-National Capital (410-576-2693)

Missouri Basin River Forecast Center

(none)

North Central River Forecast Center (952-361-6650)

Sector Detroit (313-568-9559)

Sector Lake Michigan (414-757-7100)

Sector Sault Sainte Marie (906-635-3228)

Sector Upper Mississippi River (314-269-2500)

Northeast River Forecast Center (508-622-3300)

Sector Boston (617-223-5757)

Sector Buffalo (716-843-9527)

Sector Long Island Sound (203-468-4401)
Sector New York (718-354-4353)
Sector Northern New England (207-767-0303)
Sector Southern New England (508-457-3211)

Northwest River Forecast Center (503-326-7291)

Sector Columbia River (503-561-6211)
Sector North Bend (541-756-9220)
Sector Puget Sound (206-217-6120)

Ohio River Forecast Center (937-383-0527)

Sector Ohio Valley (502-779-5300)

Southeast River Forecast Center (770-486-0028)

Sector Charleston (843-740-7050)
Sector Georgetown (843-546-2742)
Sector Jacksonville (904-714-7558)
Sector Miami (305-672-8204)
Sector Mobile (251-441-5720)
Sector North Carolina (910-343-3880)
Sector St. Petersburg (727-324-7434)

West Gulf River Forecast Center (817-831-3289)

Sector Corpus Christi (361-939-0450)
Sector Houston/Galveston (281-464-4800)

NWS Alaska Region:

WFO Anchorage, AK (907-266-5105)

Air Station Kodiak (907-487-5836)
Aids to Navigation Team Kodiak (907-487-5181)
Marine Safety Detachment Kodiak (907-486-8918)
Marine Safety Unit Valdez (907-835-7220)
Marine Safety Detachment Dutch Harbor (907-581-3466)
Marine Safety Detachment Homer (907-235-3292)
Sector Field Office Valdez (907-834-5319)
Station Valdez (907-834-5350)
Marine Safety Unit Dutch Harbor (907-581-3466)

WFO Fairbanks, AK

(None)

WFO Juneau, AK (907-790-6800)

Sector Juneau (907-463-2450)
Air Station Sitka (907-966-5447)

NWS Central Region:

WFO Aberdeen, SD

(None)

WFO Bismarck, ND

(none)

WFO Cheyenne, WY

(none)

WFO Chicago, IL (815-834-1435)

Station Chicago (773-768-4093)

Station DuSable Harbor (312-946-1048)

Station Wilmette (847-251-0214)

Marine Safety Unit Chicago (630-986-2155)

WFO Denver/Boulder, CO

(none)

WFO Des Moines, IA

(none)

WFO Detroit, MI (248-620-9804)

Sector Detroit (313-568-9559)

Station Belle Isle (313-331-3119)

Station Harbor Beach (989-479-3285)

Station Port Huron (810-984-2603)

Station Saginaw River (989-892-0556)

Station St. Clair Shores (586-778-3320)

Air Station Detroit (586-239-6701)

Aids to Navigation Team Detroit (313-568-9538)

Aids to Navigation Team Saginaw River (989-894-0412)

WFO Dodge City, KS

(none)

WFO Duluth, MN (218-729-6697)

Station Bayfield (715-779-5100)

Station Duluth (218-529-3100)

Station North Superior (218-720-5412)

Marine Safety Unit Duluth (906-635-3233)

Aids to Navigation Team Duluth (218-529-3115)

WFO Eastern North Dakota, ND

(none)

WFO Goodland, KS

(none)

WFO Grand Junction, CO

(none)

WFO Grand Rapids, MI (616-949-0643)

Station Grand Haven (616-850-2552)

Station Holland (616-850-2552)

Station Ludington (231-723-7412)

Station Muskegon (616-850-2552)

WFO Green Bay, WI (920-494-2363)

Station Green Bay (414-435-7042)

Station Sturgeon Bay (920-743-3367)

Station Two Rivers (920-793-1304)

Station Washington Island (920-847-2554)

Marine Safety Unit Sturgeon Bay (920-743-9448)

WFO Hastings, NE

(none)

WFO Indianapolis, IN

(none)

WFO Jackson, KY

(none)

WFO Kansas City/Pleasant Hill, MO

(none)

WFO La Crosse, WI

(none)

WFO Lincoln, IL (217-732-3089)

Marine Safety Detachment Peoria (309-694-7779)

WFO Louisville, KY (502-969-8842)

Sector Ohio Valley (502-779-5300)

WFO Marquette, MI (906-475-5212)

Station Marquette (906-226-3312)
Station Portage (906-482-1520)

WFO Milwaukee/Sullivan, MI (262-965-2074)

Sector Lake Michigan (414-757-7100)
Station Kenosha (262-657-4620)
Station Milwaukee (414-747-7170)
Station Sheboygan (920-452-0346)

WFO North Central Lower Michigan/Gaylord, MI (989-731-3384)

Sector Sault Sainte Marie (906-635-3228)
Station Tawas (989-362-4429)
Station Frankfort (231-723-7412)
Station Manistee (231-723-7412)
Station Alpena (906-635-3272)
Station Charlevoix (231-547-2565)
Station Sault Sainte Marie (906-635-3272)
Station St. Ignace (906-643-6402)
Air Station Traverse City (231-922-8200)
Aids to Navigation Team Sault Sainte Marie (906-632-7290)

WFO North Platte, NE

(none)

WFO Northern Indiana, IN (574-834-1104)

Station Michigan City (219-879-8371)
Station St Joseph (269-983-6114)

WFO Omaha, NE

(none)

WFO Paducah, KY (270-744-6440)

Marine Safety Unit Paducah (270-442-1621)

WFO Pueblo, CO

(none)

WFO Quad Cities, IA/IL (563-386-3976)

Marine Safety Detachment Quad Cities (306-782-0627)

WFO Rapid City, SD

(none)

WFO Riverton, WY

(none)

WFO Sioux Falls, SD

(none)

WFO Springfield, MO

(none)

WFO St. Louis, MO (636-441-8467)

Sector Upper Mississippi River (314-269-2500)

WFO Topeka, KS

(none)

WFO Twin Cities/Chanhassen, MN (952-361-6670)

Marine Safety Detachment St. Paul (952-806-0021)

WFO Wichita, KS

(none)

NWS Eastern Region:

WFO Albany, NY (518-435-9571)

Sector New York (718-354-4037)

WFO Baltimore, MD/Washington, DC (571-888-3500)

Sector Maryland-National Capital (410-576-2518)

Station Annapolis (410-267-8107)

Station Curtis Bay (410-789-1600)

Station St. Inigoes (301-872-4344)

Station Washington (202-587-4761)

WFO Binghamton, NY

(None)

WFO Blacksburg/Roanoke, VA

(None)

WFO Boston/Norton, MA (508-622-3250)

Sector Boston (617-223-5757)

Sector Southeast New England (508-457-3211)

Air Station Cape Cod (508-274-7928)

Station Boston (617-223-3224)

Station Cape Cod Canal (508-888-0020)

Station Castle Hill (401-846-3676)

Station Chatham (508-945-3830)
Station Gloucester (978-283-0705)
Station Merrimack River (978-462-3428)
Station Point Allerton (781-925-0165)
Station Point Judith (401-789-0444)
Station Provincetown (508-487-0077)
Station Woods Hole (508-457-3277)
Station Menemsha (508-645-2661)
Aids to Navigation Team Bristol (401-253-9598)
Aids to Navigation Team Woods Hole (508-457-3324)
Marine Safety Detachment New Bedford (508-999-0072)
Marine Safety Detachment New Cape Cod (508-968-6556)

WFO Buffalo, NY (716-565-0103)

Sector Buffalo (716-843-9527)
Station Alexandria Bay (315-482-2574)
Station Buffalo (716-873-9561)
Station Niagara (716-745-3328)
Station Oswego (315-343-1551)
Station Rochester (585-342-4149)
Aids to Navigation Team Buffalo (716-843-9550)

WFO Burlington, VT (802-862-8711)

Station Burlington (802-951-6760)
Marine Safety Unit Massena (716-843-9527)

WFO Caribou, ME (207-492-0180)

Station Eastport (207-853-2845)
Station Jonesport (207-497-5700)
Station Southwest Harbor (207-244-4270)

WFO Charleston, SC (843-744-2236)

Sector Charleston (843-740-7050)
Air Station Savannah (912-652-4646)
Station Charleston (843-720-7727)
Station Tybee Island (912-786-5440)
Aids to Navigation Team Charleston (843-720-7734)
Aids to Navigation Team Tybee (912-786-5791)
Marine Safety Unit Savannah (912-652-4353)

WFO Charleston, WV (304-356-5885)

Marine Safety Unit Huntington (304-733-0198)

WFO Cleveland, OH (216-416-2914)

District 9 (800-321-4400)

Station Ashtabula (440-352-0574)
Station Cleveland Harbor (216-937-0141)
Station Erie (814-838-2098)
Station Fairport Harbor (440-352-0574)
Station Lorain (440-288-1207)
Station Marblehead (419-798-4445)
Station Toledo (419-729-2034)
Marine Safety Unit Cleveland (216-937-0111)
Marine Safety Unit Toledo (419-392-0324)

WFO Columbia, SC

(None)

WFO Gray/Portland, ME (207-688-3221)

Sector Northern New England (207-767-0303)
Station Boothbay Harbor (207-633-2661)
Station Portsmouth Harbor (603-436-4415)
Station Rockland (207-596-6667)
Station South Portland (207-767-0320)

WFO Greenville-Spartanburg, SC

(None)

WFO New York, NY (631-924-0037)

Sector New York (718-354-4353)
Sector Long Island Sound (203-468-4401)
Station Fire Island (631-661-9100)
Station Jones Beach (516-785-2995)
Station Kings Point (516-466-7136)
Station Montauk (631-668-2773)
Station New Haven (203-468-4401)
Station New London (860-442-4471)
Station New York (718-354-4099)
Station Shinnecock (631-728-0078)

WFO Newport/Morehead City, NC (252-223-5122)

Sector Field Office Cape Hatteras
Sector Field Office Fort Macon (252-247-4583)
Marine Safety Detachment Nags Head
Aids to Navigation Team Wanchese (252-473-1531)
Station Emerald Isle (252-354-2462)
Station Fort Macon (252-247-4583)
Station Hatteras Inlet (252-986-2175)
Station Hobucken (252-745-3131)
Station Ocracoke (252-928-4031)

Station Oregon Inlet (252-441-6260)

WFO Philadelphia, PA/Mt Holly, NJ (609-261-6602)

Sector Delaware Bay (215-271-4800)
Air Station Atlantic City (609-677-2000)
Station Atlantic City (609-344-6594)
Station Barnegat Light (609-494-2661)
Station Indian River (302-227-2440)
Station Manasquan Inlet (732-899-0130)
Station Oxford (410-226-0580)
Station Philadelphia (215-271-4800)
Marine Safety Detachment Lewes (302-644-1909)

WFO Pittsburgh, PA (412-262-1591)

Marine Safety Unit Pittsburgh (412-221-0807)

WFO Raleigh, NC

(None)

WFO State College, PA

(None)

WFO Wakefield, VA (757-758-3200)

District 5 (757-398-6441)
Sector Hampton Roads/Virginia (757-483-8567)
Air Station Elizabeth City (252-335-6468)
Station Cape Charles (757-331-2000)
Station Chincoteague (757-336-2836)
Station Crisfield (410-968-0323)
Station Little Creek (757-464-9371)
Station Machipongo (575-331-2000)
Station Milford Haven (804-725-3732)
Station Ocean City (410-289-1905)
Station Wachapreague (757-336-2814)

WFO Wilmington, NC (910-762-0524)

Sector North Carolina (910-343-3880)
Station Georgetown (843-546-2742)
Station Oak Island (910-278-1133)
Station Wrightsville Beach (910-256-4224)

WFO Wilmington, OH (937-383-0229)

Marine Safety Detachment Cincinnati (513-921-9033)

NWS Pacific Region:

WFO Guam (671-472-0900)

Sector Guam (671-355-4910)

WFO Honolulu (808-973-5286)

Sector Honolulu (808-842-2600)

Air Station Barbers Point (808-682-2771)

Station Maui (808-986-0023)

WFO Pago Pago, American Samoa (684-699-9130)

Sector Honolulu (808-842-2600)

NWS Southern Region:

WFO Albuquerque, NM (505-244-9148)

(none)

WFO Amarillo, TX (806-335-1121, opt. 2)

(none)

WFO Atlanta, GA (888-529-5300)

(none)

WFO Austin/San Antonio, TX (830-629-0205)

(none)

WFO Birmingham (205-621-5650)

Aids to Navigation Team Eufaula (334-687-5140)

WFO Brownsville (956-504-3084)

Aids to Navigation Team South Padre Island (956-364-7433)

Station South Padre Island (956-364-7400)

Marine Safety Detachment Brownsville (956-592-0544)

WFO Corpus Christi, TX (361-299-1353, opt. 2)

Sector Corpus Christi (361-939-0450)

Aids to Navigation Team Corpus Christi (361-844-6520)

Aids to Navigation Team Port O'Connor (443-805-4988)

Station Port Aransas (361-749-5217)

Station Port O'Connor (361-983-2617)

Marine Safety Detachment Victoria (361-582-0362)

Air Station Corpus Christi (361-939-0450)

WFO El Paso, TX (575-589-3982)

(none)

WFO Fort Worth/Dallas, TX (817-831-1595)
(none)

WFO Houston-Galveston, TX (281-534-7650)
Sector Houston/Galveston (281-464-4800)
Station Houston (713-673-1185)
Station Galveston (409-766-5630)
Station Freeport (979-233-4107)
Marine Safety Unit Texas City (409-978-2700)
Aids to Navigation Team Galveston (409-766-5630)
Air Station Houston (713-578-3000)

WFO Huntsville, AL (256-890-8507)
(none)

WFO Jackson, MS (601-939-2786)
Marine Safety Detachment Vicksburg (601-636-5516)
Marine Safety Detached Duty (661-332-0964)

WFO Jacksonville, FL (904-741-4370, opt. 1)
Sector Jacksonville (904-714-7558)
Station Brunswick (912-267-7999)
Station Mayport (904-564-7592)
Aids to Navigation Jacksonville Beach (904-241-8422)

WFO Key West, FL (305-295-1316, opt. 3)
Sector Key West (305-292-8779)
Aids to Navigation Team (305-292-8873)
Station Key West (305-292-8856)
Station Marathon (305-743-1991)
Station Islamorada (305-664-8077)

WFO Knoxville/Tri-Cities, TN (423-586-8400)
(none)

WFO Lake Charles, LA (337-477-3422)
Station Lake Charles (337-477-4954)
Station Sabine Pass (409-971-2200)
Marine Safety Unit Lake Charles (337-491-7800)
Marine Safety Unit Port Arthur (281-464-4800)
Aids to Navigation Team Sabine (409-971-2200)
Marine Safety Unit Morgan City (985-380-5306)
Aids to Navigation Morgan City (985-384-7000)

WFO Little Rock, AR (501-834-9102, opt. 1)
(none)

WFO Lubbock, TX (806-745-4926)
(none)

WFO Melbourne, FL (321-259-7618, opt. 4)
Station Ponce de Leon Inlet (386-428-9085)
Station Port Canaveral (321-868-4200)
Aids to Navigation Team Ponce de Leon Inlet (386-427-3227)
Marine Safety Detachment Port Canaveral (321-784-6780)
Aids to Navigation Team Fort Pierce (772-464-6100 ext 6)
Station Fort Pierce (772-464-6100)

WFO Memphis, TN (901-544-0401)
Sector Lower Mississippi (901-544-3912)

WFO Miami, FL (305-229-4523)
Sector Miami (305-672-8204)
Air Station Miami (305-953-2100)
Aids to Navigation Team Fort Lauderdale (954-927-1611)
Marine Safety Detachment Lake Worth (561-848-8868)
Station Fort Lauderdale (954-927-1611)
Station Lake Worth Inlet (561-844-4470)
Station Miami Beach (305-535-4562)

WFO Midland/Odessa, TX (432-563-6217)
(none)

WFO Mobile, AL (251-633-2471)
Sector Mobile (251-441-5720)
Station Dauphin Island (251-861-5008)
Station Pensacola (850-453-8282)
Station Destin (850-244-7147)
Aids to Navigation Team Mobile (251-441-6244)
Aids to Navigation Team Pensacola (850-455-2354)

WFO Nashville, TN (615-754-4633, opt. 3)
Marine Safety Detachment Nashville (615-736-5421)

WFO New Orleans/Baton Rouge, LA (985-645-0565, opt. 4)
Sector New Orleans (504-365-2200)
Station Gulfport (228-868-3743)
Station Pascagoula (228-769-5605)
Aids to Navigation Team Gulfport (228-868-3743 x560)

Marine Safety Unit Baton Rouge (225-298-5400)
Marine Safety Unit Houma (985-850-6402)
Station Grand Isle (985-787-2136)
Station New Orleans (504-846-6181)
Station Venice (504-534-2332)
Aids to Navigation Team Dulac (985-563-4473)
Aids to Navigation Team New Orleans (504-253-4836)
Aids to Navigation Team Venice (504-534-7942)
Air Station New Orleans (504-393-6072)

WFO Norman/Oklahoma City, OK (405-325-3632)
(none)

WFO San Angelo, TX (325-949-0715)
(none)

WFO San Juan, PR (787-253-7865)
Sector San Juan (787-289-2041)
Air Station Borinquen (787-890-8400)
Station San Juan (787-289-2041)
Aids to Navigation Team Puerto Rico (787-729-2347)
Marine Safety Detachment St. Thomas (340-776-3497)

WFO Shreveport, LA (318-636-7345)
Aids to Navigation Team Colfax (318-627-2783)

WFO Tallahassee, FL (850-942-8833, opt. 1)
Station Panama City (850-234-2475)
Aids to Navigation Team Panama City (251-234-8139)
Marine Safety Detachment Panama City (850-233-0366)

WFO Tampa Bay Area, FL (813-645-2323, opt. 1)
Sector St. Petersburg (727-324-7434)
Air Station Clearwater (727-535-1437)
Aids to Navigation Team St. Petersburg (727-272-6847)
Station St. Petersburg (727-824-7603)
Station Fort Myers Beach (239-463-5754)
Station Sand Key (727-596-8666)
Station Yankeetown (352-447-6934)
Station Cortez (941-794-1607)

WFO Tulsa, OK (918-832-4116)
Marine Safety Detached Duty Fort Smith (479-484-7021)

NWS Western Region:

Western Region Operations Center (801-524-7907)

District 11 – Alameda, CA (510-437-3701)

District 13 – Seattle, WA (206-220-7001)

Pacific Area – Alameda, CA (510-437-3701)

WFO Billings, MT

(none)

WFO Boise, ID

(none)

WFO Elko, NV

(none)

WFO Eureka, CA (707-443-6484)

Sector Humboldt Bay (707-839-6113)

Station Humboldt Bay (707-443-2212)

Aids to Navigation Team Humboldt Bay (707-269-2550)

Station Noyo River (707-964-6611)

Marine Safety Detachment (MSD) Humboldt Bay (707-481-0295)

Station Crescent City (707-464-2172)

WFO Flagstaff, AZ

(none)

WFO Glasgow, MT

(none)

WFO Great Falls, MT

(none)

WFO Las Vegas, NV

(none)

WFO Los Angeles/Oxnard, CA (805-988-6610)

Sector Los Angeles-Long Beach (310-521-3600)

Aids to Navigation Team Los Angeles/Long Beach (310-521-3891)

Marine Safety Detachment Santa Barbara (805-962-7430)

Station Channel Islands (805-985-9823)

Station Los Angeles/Long Beach (562-495-1480)

Station Morro Bay (805-772-2167)

WFO Medford, OR (541-773-1067)

Sector North Bend (541-756-9220)
Station Chetco River (541-469-3885)
Station Coos Bay (541-888-3267)
Station Umpqua River (541-271-2138)
Aids to Navigation Team Coos Bay (541-756-9276)

WFO Missoula, MT

(none)

WFO Pendleton, OR (541-276-7832)

Aids to Navigation Team Kennewick (509-589-0978)

WFO Phoenix, AZ

(none)

WFO Pocatello/Idaho Falls, ID

(none)

WFO Portland, OR (503-261-9246)

Sector Columbia River (503-561-6211)
Station Cape Disappointment (360-642-2382)
Station Portland (503-240-9365)
Station Tillamook Bay (503-322-3531)
Aids to Navigation Team Astoria (503-325-3301)
Marine Safety Unit Portland (503-240-9301)
Station Depoe Bay (541-765-2124)
Station Siuslaw River (541-997-3631)
Station Yaquina Bay (541-265-5381)
Aids to Navigation Team Coos Bay (541-756-9276)

WFO Reno, NV (775-673-8100)

Station Lake Tahoe (530-583-4433)

WFO Sacramento, CA (916-979-3051)

Air Station Sacramento (916-643-7659)
Station Rio Vista (707-374-2871)
Station Vallejo (707-643-2975)

WFO Salt Lake City, UT

(none)

WFO San Diego, CA (858-675-8700)

Sector San Diego (619-278-7000)
Aids to Navigation Team San Diego (619-278-7000)
Station San Diego (619-278-7000)

WFO San Francisco Bay Area, CA (831-656-1717)

Sector San Francisco (415-399-3547)
Aids to Navigation Team San Francisco (415-399-3515)
Station Bodega Bay (707-875-3596)
Station Golden Gate (415-331-8247)
Station Monterey (831-647-7300)
Station San Francisco (415-399-3478)
Air Station San Francisco (650-808-2902)

WFO San Joaquin Valley, CA

(none)

WFO Seattle/Tacoma, WA (206-526-6087)

Sector Puget Sound (206-217-6120)
Sector Field Office Port Angeles (360-417-5840)
Station Port Angeles (360-417-5990)
Station Bellingham (360-734-1692)
Station Neah Bay (360-645-2237)
Station Quillayute River (360-374-6469)
Station Seattle (206-217-6750)
Aids to Navigation Team Puget Sound (206-217-6915)
Marine Safety Unit Puget Sound (206-217-6200)
Station Grays Harbor (360-268-0121)

WFO Spokane, WA

(none)

WFO Tucson, AZ

(none)

National Centers for Environmental Prediction, Central Pacific Hurricane Center, and Tsunami

Aviation Weather Center (816-584-7239)

District 1 – Boston, MA – (202-372-2100)
District 5 – Portsmouth, VA - (757-398-6441)
District 7 – Miami, FL - (305-415-6800)
District 8 – New Orleans, LA - (504-589-6225)
District 11 – Alameda, CA - (510-437-3701)
District 13 – Seattle, WA - (206-220-7001)
District 14 - Honolulu, HI – (800-331-6176)

Central Pacific Hurricane Center/Honolulu Forecast Office (808-973-5286)

District 14 - Honolulu, HI – Tropical Central Pacific (south of 30N, 160E - 140W) – (800-331-6176)

Climate Prediction Center – (301-683-3449)

- District 1 – Boston, MA – (202-372-2100)
- District 5 – Portsmouth, VA - (757-398-6441)
- District 7 – Miami, FL - (305-415-6800)
- District 8 – New Orleans, LA - (504-589-6225)
- District 11 – Alameda, CA - (510-437-3701)
- District 13 – Seattle, WA - (206-220-7001)
- District 14 - Honolulu, HI – (800-331-6176)
- District 17 – Juneau, AK – (907-463-2000)

National Hurricane Center/Tropical Analysis and Forecast Branch (305-229-4424)

- District 7 – Miami, FL - Eastern Gulf of Mexico, Caribbean Sea, and tropical North Atlantic (south of 31N)
- District 8 – New Orleans, LA - Western and Central Gulf of Mexico - (504-589-6225)
- District 11 – Alameda, CA - Tropical Northeast Pacific (south of 30N, east of 140W) - (510-437-3701)
- District 14 – Honolulu, HI – Tropical Northeast Pacific (south of 30N, east of 140W) – (800-331-6176)

National Tsunami Warning Center - Palmer, AK (907) 745-4212)

- District 1 – Boston, MA – (202-372-2100)
- District 5 – Portsmouth, VA - (757-398-6441)
- District 7 – Miami, FL - (305-415-6800)
- District 8 – New Orleans, LA - (504-589-6225)
- District 11 – Alameda, CA - (510-437-3701)
- District 13 – Seattle, WA - (206-220-7001)
- District 17 – Juneau, AK – (907-463-2000)

Ocean Prediction Center (301-683-1520)

- District 1 – Boston, MA – North Atlantic (31N to 67N, west of 35W) - (202-372-2100)
- District 5 – Portsmouth, VA - North Atlantic (31N to 67N, west of 35W) – (757-398-6441)
- District 11 – Alameda, CA - Northeast Pacific (north of 30N and south of a line from Bering Strait to 50N)
- District 13 – Seattle, WA - Northeast Pacific (north of 30N and south of a line from Bering Strait to 50N)

Pacific Tsunami Warning Center - Ewa Beach, HI - (808) 689-8207

- District 7 – Miami, FL - (305-415-6800)
- District 11 – Alameda, CA - (510-437-3701)
- District 14 - Honolulu, HI – (800-331-6176)

Space Weather Prediction Center – (303-497-3029)

- District 1 – Boston, MA – (202-372-2100)
- District 5 – Portsmouth, VA - (757-398-6441)
- District 7 – Miami, FL - (305-415-6800)
- District 8 – New Orleans, LA - (504-589-6225)
- District 11 – Alameda, CA - (510-437-3701)
- District 13 – Seattle, WA - (206-220-7001)
- District 14 - Honolulu, HI – (800-331-6176)
- District 17 – Juneau, AK – (907-463-2000)

Storm Prediction Center – (816-584-7220)

- District 1 – Boston, MA – (202-372-2100)
- District 5 – Portsmouth, VA - (757-398-6441)
- District 7 – Miami, FL - (305-415-6800)
- District 8 – New Orleans, LA - (504-589-6225)
- District 11 – Alameda, CA - (510-437-3701)
- District 13 – Seattle, WA - (206-220-7001)

Weather Prediction Center – (301-683-1530)

- District 1 – Boston, MA – (202-372-2100)
- District 5 – Portsmouth, VA - (757-398-6441)
- District 7 – Miami, FL - (305-415-6800)
- District 8 – New Orleans, LA - (504-589-6225)
- District 11 – Alameda, CA - (510-437-3701)
- District 13 – Seattle, WA - (206-220-7001)
- District 14 - Honolulu, HI – (800-331-6176)
- District 17 – Juneau, AK – (907-463-2000)